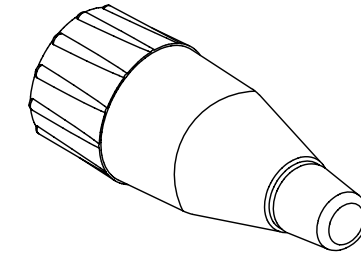
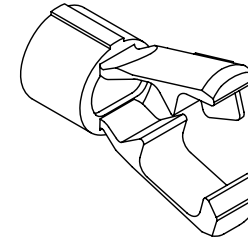
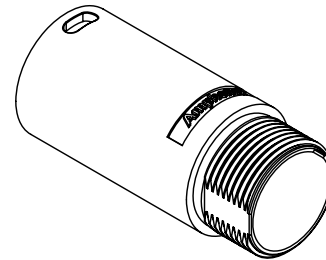


ACTUAL SIZE



CAT P/No.	SHELL FINISH	CONTACT FINISH
AC3MG-AU	NICKEL	GOLD PLATING
AC3MGJ-AU		STAMPED
AC3MG		SILVER PLATING
AC3MGJ		STAMPED
AC3MMG-AU	NICKEL	GOLD PLATING
AC3MMGJ-AU		MACHINED
AC3MMG		SILVER PLATING
AC3MMGJ		MACHINED
AC3MGB-AU	BLACK	GOLD PLATING
AC3MGBJ-AU		STAMPED
AC3MGB		SILVER PLATING
AC3MGBJ		STAMPED
AC3MMGB-AU	BLACK	GOLD PLATING
AC3MMGBJ-AU		MACHINED
AC3MMGB		SILVER PLATING
AC3MMGBJ		MACHINED

UNLESS OTHERWISE SPECIFIED TOLERANCE TO BE		THIS DOCUMENT IS THE PROPERTY OF AMPHENOL AUSTRALIA PTY. LTD. NO PART THEREOF MAY BE REPRODUCED AND USED WITHOUT THE PRIOR WRITTEN CONSENT OF THE OWNER				0	FIRST ISSUE	MH	24-07-07	----	
LINEAR		ANGULAR		CAD FILE: 55010471000110	DRN: MH	DATE: 24-07-07	REV.	CHANGE DETAILS	BY	DATE	CHG/No
X ± 0.5	X° ± 1°			MATL: REFER TO COMPONENT	CKD: MH	DATE: 24-07-07	TITLE: AC3M×G× LINE CONNECTOR CUSTOMER DWG		Amphenol Australia Pty.Ltd, 2 Fireways Blvd, Keysborough, Vic3173		
X.X ± 0.1	X°X' ± 30'			DO NOT SCALE	FINISH: REFER TO COMPONENT	APP'D: MH	DATE: 24-07-07	DRAWING NO. 55010471-000-1		SHEET 2 OF 2	
X.XX ± 0.05	X°X'X" ± 15"			DIMENSIONS IN MILLIMETRES		THIRD ANGLE PROJECTION	SCALE: 1:1 UOS	PART No: REFER TO CHART	SIZE: A4		