

POWERSAFE



New version according to VG96944
derived from MIL-DTL-38999 Series III/EN3645



Amphenol



Connecting people + Technology

www.amphenol-socapex.com

For over 75 years, Amphenol Socapex has provided reliable interconnect solutions to a large base of customers worldwide. The company manufactures both standard connectors and custom solutions to address specific needs and industry requirements.

PowerSafe MIL-DTL-38999 Series III derivated product was developed to transmit high power with voltage over 500V in high demanding environments, in keeping the full safety of the user.

Main Features

- Focus both on **USER SAFETY** and on the **MIL-DTL-38999 Series III performances**
- **First mate/last break:** One earth contact linked to the shell
- **Last mate/first break:** One pilot contact to be used as a relay of power break before disconnecting the mated pair
- **Socket inserts are IP2X** (finger test)

**USER
SAFETY**



Added Benefits

- In accordance with the new standard for power equipment
- Homogeneity with standard MIL-DTL-38999 III connectors when power is needed on the equipment (same panel drilling)
- Qualification in progress according to the most stringent standards:
 - ▶ User safety: DIN EN-61984 (VDE 0627)
 - ▶ Product standard: VG96944

Markets & Applications

Markets

- **Defense:** C4ISR/Battlefield/Ground Vehicles/Missile
- **Avionics**
- **Harsh industrial markets**

Applications

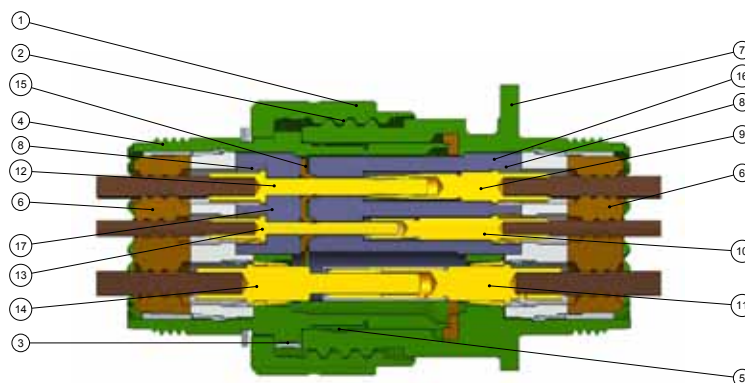
- I/O Power for boxes
- Power connectors spread on the field (drums)
- Electrical power generator



Mechanical Characteristics

- ① Coupling nut
- ② Quick coupling thread
- ③ Anti-decoupling device
- ④ Plug shell
- ⑤ Spring fingers (EMI)
- ⑥ Grommet
- ⑦ Receptacle shell
- ⑧ Contact retention clips
- ⑨ Phase and neutral socket contact

- ⑩ Pilot socket contact
- ⑪ Protective socket contact
- ⑫ Phase and neutral pin contact
- ⑬ Pilot pin contact
- ⑭ Protective pin contact
- ⑮ Interfacial seal
- ⑯ Socket insert
- ⑰ Pin insert



Durability	500 cycles
Shock	Half sine wave of 300 G magnitude during 3ms per EIA364.27
Sine vibrations	60 G from - 55°C to + 175°C (olive drab cadmium finish) 60 G from - 55°C to + 200°C (nickel finish and firewall version)
Random vibrations per EIA364.28	1G ² / Hz at 175°C olive drab cadmium finish 1G ² / Hz at 200°C nickel finish and firewall version 5G ² / Hz at ambient
Shell size	13/17/25 (3 arrangements)
Shell and Backshell plating	O.D cadmium, Black Zinc Nickel, Electroless Nickel
Insert material	Thermoplastic insert Silicone rubber back insert and interfacial seal
Contacts	Crimp, removable contacts Gold plating for pilot contact and silver plating for protective, phase and neutral contacts

Contact retention force:

Contact Size	20	16	12	6
Maximum load (N)	67	111	111	111

Environmental Characteristics

Temperature range	-65°C to + 200°C (Electroless Nickel plating) -65°C to + 175°C (O.D Cadmium, Black Zinc Nickel platings)
Salt spray exposure per EIA 364.26	500H Black Zinc Nickel 500H O.D Cadmium 48H Electroless Nickel
Sealing	IP 68 (48H immersion under 2 meters) when mated and with the suitable backshells (see page 6)

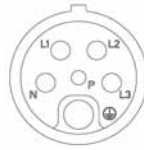
Electrical Characteristics

Arrangements	Operating voltage AC or DC	Dielectric withstanding voltage mated at sea level	Contact rating		
			Pilot contact	Phase and neutral contacts	Protective contact
13-E4	250 V	1500 Vrms	7.5 A	16 A	16 A
17-E6	500 V	2500 Vrms	13 A	25 A	25 A
25-E6	500 V	2500 Vrms	13 A	63 A	63 A

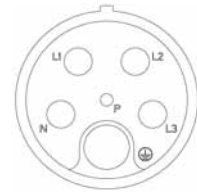
Insert Arrangements



13-E4



17-E6



25-E6

Pilot contact	1 Size 20	1 Size 16	1 Size 16
Phase & neutral	2 Size 16	4 Size 12	4 Size 6
Protective contact	1 Size 16	1 Size 12	1 Size 6

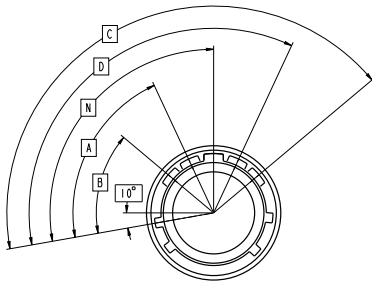
Other platforms in development. Please consult us.

Polarization

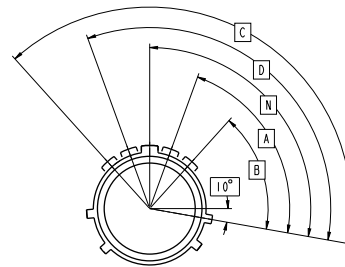
To avoid cross-plugging problems in applications requiring the use of more than one PowerSafe connector of the same size, alternate key-rotations are available as indicated in the chart aside. As shown in the accompanying diagram, the major key rotates clockwise from the secondary ones.

In the reference system, the polarization is shown by the letters N, A, B, C, D.

Shell size	Position of the major keyway				
	Polarizations				
	N	A	B	C	D
13	100	80	68	132	120
17	100	82	70	130	118
25	100	85	74	126	115



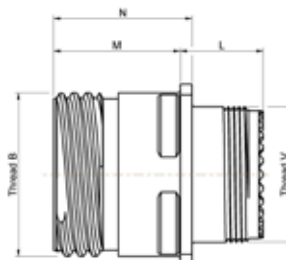
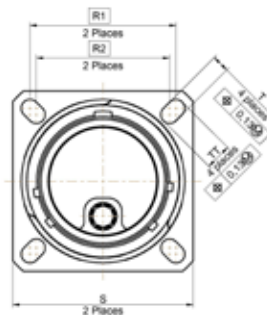
Receptacle - Front face shown



Plug - Front face shown

Overall Dimensions

Square flange receptacle
TVP00RW
TVP00ZN
TVPS00RF



Shell size	B thread Class 2A .1P- .3L-TS (inches)	L Max (mm)	M 0 -0.13 (mm)	N +0.13 0 (mm)	R1 (mm)	R2 (mm)	S ±0.3 (mm)	T ±0.2 (mm)	TT ±0.2 (mm)	V thread metric
13	.875	15.5	19.5	22.99	23.01	20.62	28.6	3.25	4.93	M18x1-6g
17	1.1875	15.6	22	25.49	26.97	24.61	33.3	3.25	4.93	M25x1-6g
25	1.625	20.7	23.2	27.49	38.1	34.93	46	3.91	6.15	M37x1-6g

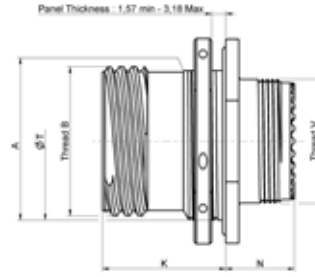
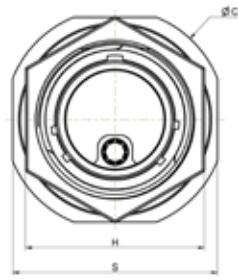


Jam nut receptacle

TV07RW

TV07ZN

TVS07RF



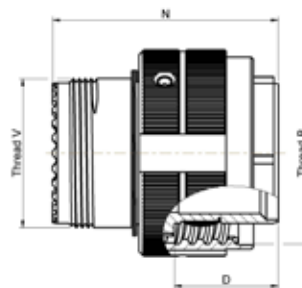
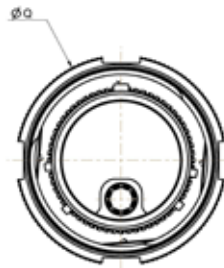
Shell size	B thread Class 2A .1P-.3L-TS (inches)	A +0.1 -0.15 (mm)	C Max (mm)	K (mm)	N (mm)	H Hex 0 -0.1 (mm)	S +/-0.4 (mm)	T 0 -0.13 (mm)	V thread metric	Hex nut max torque N.m
13	.875	23.82	38.4	22.6	13.9	30	34.9	25.35	M18x1-6g	6.9
17	1.1875	30.15	44.7	25.1	13.9	36	41.3	31.95	M25x1-6g	9.8
25	1.625	42.85	59	27.1	25.9	50	55.6	44.43	M37x1-6g	15

Straight plug

TV06RW

TV06ZN

TVS06RF

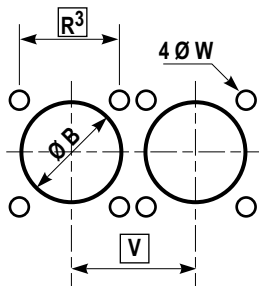


Shell size	B thread Class 2A .1P-.3L-TS (inches)	Q Max (mm)	N (mm)	D (mm)	V thread metric (mm)
13	0.875	29.4	35.5	15.01	M18x1-6g
17	1.1875	35.7	38	17.51	M25x1-6g
25	1.625	48	46	19.51	M37x1-6g

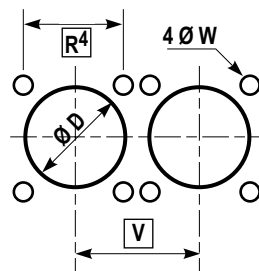
* Conforms to CECC 75.201.002 (coupling nut for arctic gloves)

Panel drilling for receptacles

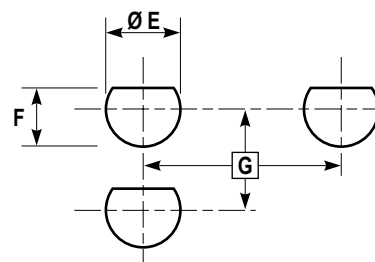
Square flange receptacle rear panel mounting



Square flange receptacle front panel mounting

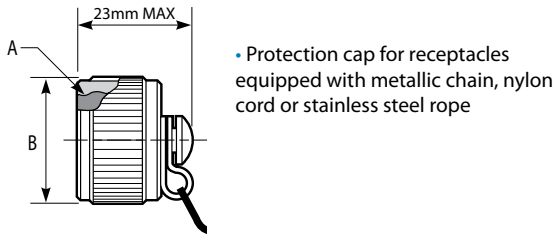


Jam nut receptacle rear panel mounting

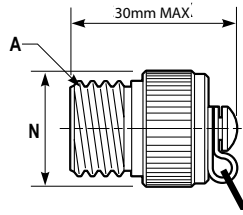


Shell size	R³ (mm)	R⁴ (mm)	V Mini (mm)	ØB Min (mm)	ØD Min (mm)	ØW ±0.13 (mm)	G Mini (mm)	ØE +0.25 0 (mm)	F 0 -0.25 (mm)
13	23.01	20.62	30.20	23.42	19.05	3.25	36.00	25.65	24.26
17	26.97	24.61	36.50	30.96	25.81	3.25	43.30	32.01	30.73
25	38.10	34.93	48.80	42.47	37.69	3.81	59.70	44.70	43.43

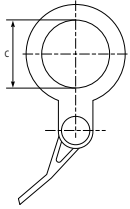
Protective Caps



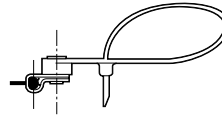
- Protection cap for receptacles equipped with metallic chain, nylon cord or stainless steel rope



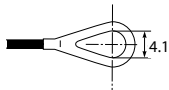
- Protection cap for plugs equipped with metallic chain, nylon cord or stainless steel rope



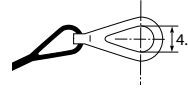
- Termination of the chain, rope (RO type) or cord for jam nut receptacle protection caps



- Termination of the cord for plugs protection caps



- Termination of the cord or rope (R type) for square flange receptacle protection caps



- Termination of the chain for square flange receptacle and plug protection caps

Cap type	Metallic chain length (mm)	Nylon cord length (mm)	Stainless steel rope length (mm)
BEC/BER for receptacle	152	105	127
BF for plug	127	160	127

Shell size	A thread 0.1P-0.3L-TS Class 2B (inches)	B Dia Max (mm)	C Dia Min (mm)	N Dia Max (mm)
13	0.8750	28.58	25.81	29.74
17	1.1875	36.53	32.16	36.47
25	1.6250	47.63	44.86	48.62

Ordering information

Cap Series	B	EC	N	TV	W	15
Protection cap type						
EC: For square flange receptacle						
ER: For jam nut receptacle						
F: For plug						
Wire type						
N: Nylon cord						
Blank for metallic chain						
R: Jacketed stainless steel rope						
RO: Jacketed stainless steel rope with washer end (only for plug)						
Connector type						
Finish						
F: Electroless nickel plated						
W: Olive drab cadmium plated						
ZN: Black zinc Nickel						
Corresponding connector shell size:						
13/17/25						

Backshells

- Compatible with AS85049 suitable for MIL-DTL-38999 Series III connectors
- For IP68 sealing, we recommend the following backshells:



Shell size	Backshell from EMCA	Shrink boot pre-coated	Clamping bands
13	VG95319-1011G012A	VG95343T29B001A	895693 or A10089
17	VG95319-1011G005A	VG95343T29B003A	
25	VG95319-1011G010A	VG95343T29B006A	

- Other backshells for shielding:

SHIELDING	
	<p>TV-35: BAND BACKSHELL FOR SHIELDING</p> <ul style="list-style-type: none"> • Full 360° shield termination • Available with different cabling chambers • Easy maintenance or repairability • Sealing ensured by straight or right angled heat-shrink molded piece • Right angle version: TV SBC
	<p>TV NSA: HIGH LEVEL OF EMI/RFI PROTECTION</p> <ul style="list-style-type: none"> • Electrical continuity between cable and connector by clamping the braid with a screwing system • Free inner ring to avoid twisting of the braid when screwing • Sealing ensured by straight or right angle heat-shrink molded piece

How to Order

Series	TV	P00	RW	13 E4	P	A
Shell type						
Square flange receptacle: 175°C (O.D. cadmium+Zn Ni): P00 200°C (nickel): PS00						
Jam nut receptacle: 175°C (O.D. cadmium+Zn Ni): 07 200°C (nickel): S07						
Straight plug: 175°C (O.D. cadmium+Zn Ni): 06 200°C (nickel): S06						
Shell material, finish and contact type						
Aluminium						
RW: Olive drab cadmium plated 175°C, crimp contacts						
ZN: Black Zinc Nickel plated 175°C, crimp contacts						
RF: Electroless nickel plated 200°C, crimp contacts						
For green Zinc Cobalt over Aluminum, Bronze Marine or Stainless steel: please consult us						
Shell size & Contacts arrangement						
13-E4						
17-E6						
25-E6						
Contact type						
P: Pin						
S: Socket						
Polarization						
Blank for normal or A, B, C, D						

Contacts and Tools

Arrangement	Contact type	Size	Contacts		Wires			Wire stripping length	Crimping tools			Insertion tools			Removal tools										
			Proprietary	Part Number	AWG	Section mm ²	dia over insulator		Tools	Positioner	Selector position	Plastic color	Metallic		Plastic color	Metallic									
							Pin						Socket	Min		Max	Straight type	Angle type	Straight type	Angle type					
13-E4	Pilot	20	600665	900041	20	0,61	1,02	2,11	6 - 6.5	M22520/1-01	M22520/1-04	3	M81969/14-10 red / orange	809817	M81969/8-05	M81969/14-10 red / orange	809847	M81969/8-06							
	Phase Neutral	16	600666	600676	14	1,23	1,65	2,77				6							M81969/14-03 blue / white	809816	M81969/8-07	M81969/14-03 blue / white	809846	M81969/8-08	
					16	0,96						6													/
Protective	600667	600677	20	0,61			4																		
17-E6	Pilot	16	600660	900040	16	1,23	1,65	2,77	6 - 6.5	M22520/1-01	M22520/1-04	6	M81969/14-03 blue / white	809816	M81969/8-07	M81969/14-03 blue / white	809846	M81969/8-08							
	Phase Neutral	12	600661	600671	12	2,98	2,46	3,61				8							M81969/14-04 yellow / white	809824	M81969/8-09	M81969/14-04 yellow / white	809850	M81969/8-10	
					14	1,94						7													/
Protective	600662	600672						4																	
25-E6	Pilot	16	600660	900040	16	1,23	1,65	2,77	6 - 6.5	M22520/1-01	M22520/1-04	6	M81969/14-03 blue / white	/	/	M81969/14-03 blue / white	/	/							
	Phase Neutral	6	600663	600673	6	13,61	7,3	8,1				14 - 15,5							809947 + 809908	/	/	/	/	/	809696
																			or M22520/23-01 + M22520/23-03 + 809697						
Protective	600664	600674																							

Shell size	Qualified Cables for VG96944
13-E4	VG95218T028C008
17-E6	VG95218T028C010
25-E6	VG95218T028C012

Crimping tools

MANUAL CRIMPING PLIERS
M22520/1-01



HYDRAULIC PLIERS
809947



PNEUMATIC PLIERS
M22520/23-01



Amphenol in the world

Amphenol Socapex

948, promenade de l'Arve BP29
74311 Thyez Cedex - France
Phone: +33 (0)4 50 89 28 00
contact@amphenol-socapex.fr
www.amphenol-socapex.com

 [www.twitter.com/AmphenolSocapex](https://twitter.com/AmphenolSocapex)
 www.linkedin.com/company/amphenol-socapex

Other Amphenol Sales contacts in Europe

Amphenol Air LB
2 rue Clément Ader, ZAC de Wé
08110 Carignan - France
Phone: +33 (0)1 49 05 30 00

Amphenol AIR LB GmbH
Am Kleinbahnhof 4
66740 Saarlouis - Germany
Phone: +49 6831 981 00

Amphenol TUCHEL ELECTRONICS
August-Haeusser-Str. 10
D-74080 Heilbronn - Germany
Phone: +49 7131 929 00

Amphenol BENELUX
Zadkinestraat 26
Almere, 1328 NN - The Netherlands
Phone: +31 651 296835

Amphenol LIMITED
Thanet Way, Whitstable
Kent, CT53JF - United Kingdom
Phone: +44 1227 773 200

Amphenol ITALY
Via Barbaiana n.5
20020 Lainate - Milano - Italy
Phone: +39 293 254 214

Amphenol IBERICA
Edificio Burgosol, Oficina nr 55 - Comunidad
de Madrid, 35-bis Las Rozas (Madrid) - Spain
Phone: +34 91 640 73 06

Amphenol NORDIC
Phone: +46 702 129 200 (Mil/Aero)
+46 76-790 95 60 (Industrial)

Amphenol AUSTRIA & CEE
Wiener Gasse 68
2380 Perchtoldsdorf
Phone: +43 699 10396071

Amphenol POLAND
Lwowska 8/16,
53-516 Wrocław - Poland
Phone: +48 513017157

Amphenol SWITZERLAND & SOUTH CENTER
*Switzerland, Slovenia, Serbia, Montenegro,
Yugoslavia, Greece, Bulgaria*
948, promenade de l'Arve BP29
74311 Thyez Cedex - France
Phone: +33 (0)4 50 89 28 40

Amphenol Sales contacts in Asia

Amphenol DAESHIN
558 SongNae-Dong SoSa-Gu, Bucheon-city, Kyunggi-Do
Korea 420-130
Phone: +81-32 610 3830/3845

Amphenol EAST ASIA LTD.
No.72, Bendemeer Road,
#03-32/33, Luzerne
Singapore 339941
Phone: +65 6294 2128

Amphenol INTERCONNECT INDIA PRIVATE LIMITED
105 Bhosari Industrial Area - Pune 411 026 - India
Phone: +91 20 3068 8304

Amphenol PCD CO. LTD
Building 21, 1st Liao Keng Industrial Zone, Shi Yan Street
Bao An District, Shenzhen 518108
China
Phone: +86 755 8173 8000/8286

Amphenol JAPAN
471-1, Deba, Ritto-City, Shiga 520 3041 - Japan
Phone: +81 77 553 8501

Amphenol Sales contacts in North America

Amphenol PCD
72 Cherry Hill Drive - Beverly, MA. 01915 - USA
Phone: +1 978 624 3400

Amphenol FIBER SYSTEMS INT.
1300 Central Expwy N, Suite 100
Allen, TX 75013 - USA
Phone: +1 214 547 2400

Amphenol AEROSPACE OPERATIONS
40-60 Delaware street - Sidney, NY 13838-1395 - USA
Phone: +1 607 563 5011

Amphenol BACKPLANE SYSTEMS
18 Celina avenue - Nashua, NH 03063 - USA
Phone: +1 603 883 5100

Amphenol CANADA CORPORATION
605 Milner avenue - Toronto, Ontario - Canada - M1B 5X6
Phone: +1 416 291 4401

Amphenol Sales contacts in Other Areas

Amphenol ARGENTINA
Av. Callao 930 2do piso Oficina B "Plaza" C1023 - AAP
Buenos Aires - Argentina
Phone: +54 11 4815 6886

Amphenol AUSTRALIA PTY LIMITED
2 Fiveways Blvd., Keysborough - Melbourne
Victoria 3173- Australia
Phone: +61 3 8796 8888

Amphenol DO BRAZIL
Rua Diogo Moreira, 132, 20 andar, rooms 2001-2-3
CEP: 05423-010 Sao Paulo SP - Brazil
Phone: +55 11 3815 1003

Bar-Tec Ltd., ISRAEL
3 Hagavish Street, Kfir-Barkan Bldg. East Industrial
Zone - Kfar-Sava, 44102 - Israel
Phone: +972 9 764 4100

Amphenol MEXICO
Prolongacion Reforma 61-6 B2
Col Paseo de las Lomas - C.P. 013130 Mexico
Phone: +52 55 5258 9984

Amphenol RUSSIA
Yaroslavskaja Street 8,
129164 Moscow - Russia
Phone: +7 495 937 6341

Amphenol AFRICA
30 Impala Rd,
Sandton 2146, South Africa
Phone: +27 82 410 5179

Amphenol TURKEY
Sun Plaza 15 Kat: 15 Maslak Hah. Bilim Sok. No.5
Sisli/Istanbul, 34398 - Turkey
Phone: +90 212 367 92 19



www.amphenol-socapex.com

For Technical Support, please contact us:
+33 (0)4 50 89 28 49
www.amphenol-socapex.com/technical_support

*The information given in this document is a guideline only.
We reserve the right to modify our products in any way we deem necessary.
Any duplication is prohibited, unless approved in writing.
Designed by Amphenol Socapex
July 2015*

DOC-0099#-ANG

Your local Contact: