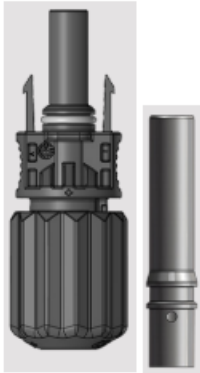
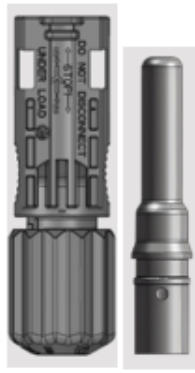


### Amphenol Energy and Power Generation Industry Connectors PRODUCT SHORTFORM



(Cable) Male Body with SKT contact (+)



(Cable) Female Body w/PIN contact (-)



(Panel) Male Body with SKT contact (+)



(Panel) Female Body w/PIN contact (-)

### Amphe-PV H4 Plus™

UL Rated Voltage:	1500VDC
TÜV rated Voltage:	1500VDC
UL Rated Current:	15A/2.5mm <sup>2</sup>
UL Rated Current:	20A/4.0mm <sup>2</sup>
UL Rated Current:	30A/6.0mm <sup>2</sup>
UL Rated Current:	50A/10mm <sup>2</sup>
TÜV rated Current:	25A/2.5mm <sup>2</sup>
TÜV rated Current:	35A/4.0mm <sup>2</sup>
TÜV rated Current:	45A/6.0mm <sup>2</sup>
TÜV rated Current:	65A/10mm <sup>2</sup>
IP Rating:	IP68, mated
	1m, 24hrs
	IP2X touchproof
Cable OD:	5.0mm-8.7mm
Ambient Temp:	-40°C to +85°C
Flammability:	UL 94 V-0
UV Resistant?	Yes
Panel Mount Size:	M12
Mating Style:	Self-locking

### Amphe-PV UTX Series

UL Rated Voltage:	1500VDC
TÜV rated Voltage:	1500VDC
UL Rated Current:	15A/2.5mm <sup>2</sup>
UL Rated Current:	20A/4.0mm <sup>2</sup>
UL Rated Current:	30A/6.0mm <sup>2</sup>
UL Rated Current:	50A/10mm <sup>2</sup>
TÜV rated Current:	25A/2.5mm <sup>2</sup>
TÜV rated Current:	35A/4.0mm <sup>2</sup>
TÜV rated Current:	45A/6.0mm <sup>2</sup>
TÜV rated Current:	65A/10mm <sup>2</sup>
IP Rating:	IP68, mated
	1m, 1hr
	IP2X touchproof
Cable OD:	5.3mm-7.65mm
Ambient Temp:	-40°C to +85°C
Flammability:	UL 94 V-0
UV Resistant?	Yes
Panel Mount Size:	M12 or M14
Mating Style:	Self-locking



(Cable) Male Body with SKT contact (+)



(Cable) Female Body w/PIN contact (-)

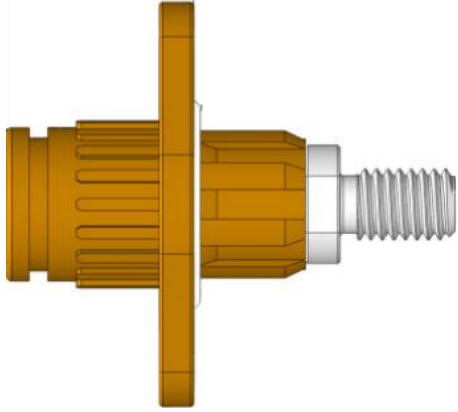


(Panel) Male Body with SKT contact (+)

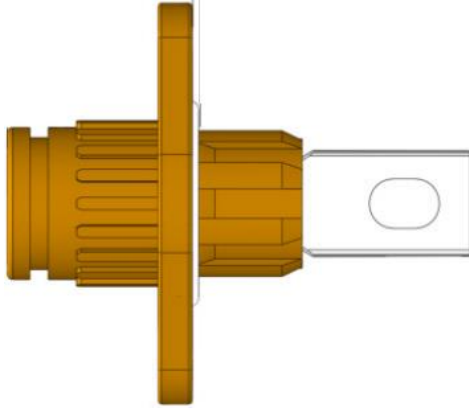


(Panel) Female Body w/PIN contact (-)

**1500VDC**



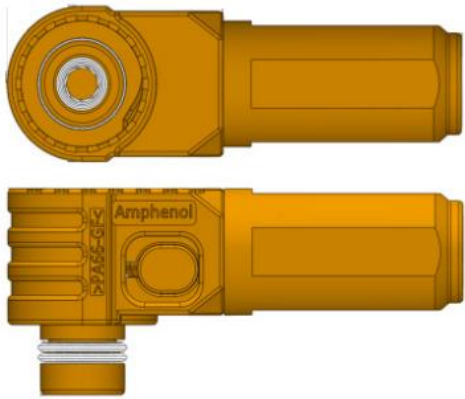
**Threaded post RECP with keyway**



**Busbar RECP with keyway**

**SurLok Plus™**

Voltage Rating:	1500VDC
RADSOK® Size:	3.6mm
RADSOK® Size:	5.7mm
RADSOK® Size:	8.0mm
RADSOK® Size:	10.3mm
Current Rating:	70A (3.6mm RADSOK)
Current Rating:	120A (5.7mm RADSOK)
Current Rating:	200A (8.0mm RADSOK)
Current Rating:	350A (10.3mm RADSOK)
Cable Size:	6-10mm <sup>2</sup> (3.6mm)
Cable Size:	16-25mm <sup>2</sup> (5.7mm)
Cable Size:	35-50mm <sup>2</sup> (8.0mm)
Cable Size:	70-95mm <sup>2</sup> (10.3mm)
Operating Temp.:	-40°C to +125°C
Sealing Available:	Yes, IP67 (mated)
Keying Available:	Yes, K1 (20°) & K2 (30°)
Colours Available:	Orange, Black & Red
Flammability:	UL 94 V-0
Mating Style:	Spring Locking
Protection:	Touch Proof
Certifications:	UL1977/4128
	TUV 2PFG2740



**90° Right Angle PLUG with keyway**



**Wind-Lok Plus™**

Voltage Rating:	2500VDC
Current Rating:	800A
RADSOK® Size:	18mm
Mating Style:	1/3 Turn Reverse Bayonet WITH secondary locking
RECP Types:	Crimp Contact OR 2-Holes Busbar
Insert Rotations:	N, W, X, Y, J
Cable Sizes:	120mm <sup>2</sup> (350A)
	185mm <sup>2</sup> (400A)
	200mm <sup>2</sup> (450A)
	240mm <sup>2</sup> (500A)
	300mm <sup>2</sup> (650A)
Protection:	Finger Proof Vibration & Environmental
Durability:	2000+ Mating Cycles
Operating Temp.:	-40°C to +125°C
Finish:	Black Anodize
Contact Gender:	RECP = PIN
	PLUG = SKT
Finish:	Black Anodized
Salt Spray Rating:	300 days



**Panel mount RECP with PIN contact and busbar**



**Panel mount RECP with crimp PIN contact and crimp termination**



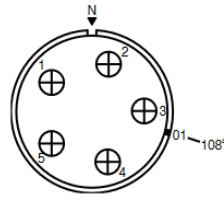
**Straight PLUG with EMI Metal Cable Gland**

MM40M1	M40 EMI cable gland size 18-25mm
MM40M2	M40 EMI cable gland cable size 22-32 mm
MM50M	M50 EMI cable gland cable size 32-38 mm
MM63M	M63 EMI cable gland cable size 34-45 mm

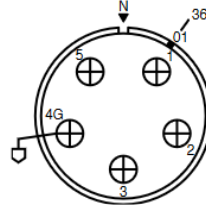


**Square Flange RECP**

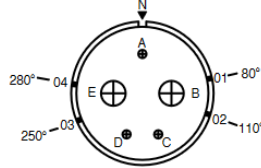
Qty.	Size AWG	Service Voltage Rating
5	1/0	E



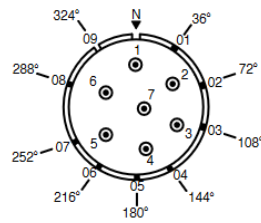
Qty.	Size AWG	Service Voltage Rating
5	1/0	E



Qty.	Size AWG	Service Voltage Rating
2	1/0	E
3	12	E



Qty.	Size AWG	Service Voltage Rating
7	8	E



## Star-Line®

Service Voltage Rating:	E (1750VDC rms)
Insert Configuration:	24-79
Wire Size:	1/0AWG (50mm <sup>2</sup> )
No. of contacts:	5
Contact Termination:	Solder or Pressure
Current Rating:	150A
Insert Configuration:	24-49
Wire Size:	1/0AWG (50mm <sup>2</sup> )
No. of contacts:	5
Contact Termination:	Solder or Pressure
Current Rating:	150A
Insert Configuration:	20-49
Wire Size:	2x 1/0 + 3x 12 (4mm <sup>2</sup> )
No. of contacts:	5
Contact Termination:	Solder or Crimp
Current Rating:	150A (1/0) & 23A (#12)
Insert Configuration:	20-359
Wire Size:	8AWG (10mm <sup>2</sup> )
No. of contacts:	7
Contact Termination:	Crimp
Current Rating:	46A
Finish:	Hard Anodic Coating



**Inline Cable Mounted RECP**

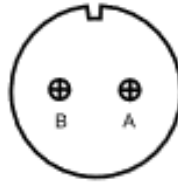


**Straight PLUG**

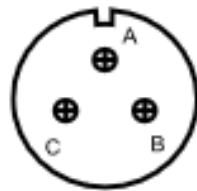
## P-LOK®

Service Voltage Rating:	E (1750VDC rms)
Insert Configuration:	22-8
Wire Size:	12-14AWG (2.5-4mm <sup>2</sup> )
No. of contacts:	2
Contact Termination:	Solder or Crimp
Current Rating:	23A (max)
Insert Configuration:	22-9
Wire Size:	12-14AWG (2.5-4mm <sup>2</sup> )
No. of contacts:	3
Contact Termination:	Solder or Crimp
Current Rating:	23A (max)
Insert Configuration:	28-3
Wire Size:	8AWG (10mm <sup>2</sup> )
No. of contacts:	3
Contact Termination:	Solder or Crimp
Current Rating:	46A (max)
Insert Configuration:	22-10
Wire Size:	16-20AWG(0.5-1.5mm <sup>2</sup> )
No. of contacts:	4
Current Rating:	13A (max)
Finish:	Black Hard Coat
IP Rating:	IP65 (mated)

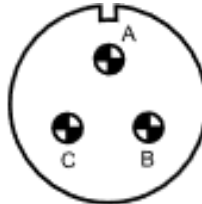
**22 - 8  
2 - #12  
Serv. E**



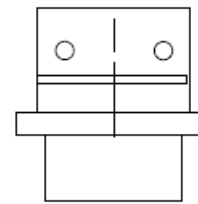
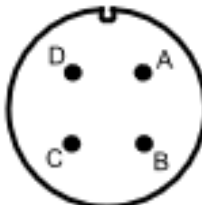
**22 - 9  
3 - #12  
Serv. E**



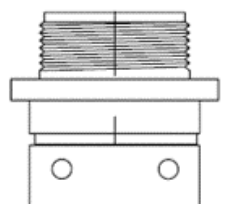
**28 - 3  
3 - #8  
Serv. E**



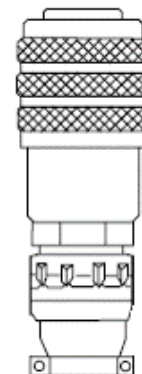
**22 - 10  
4 - #16  
Serv. E**



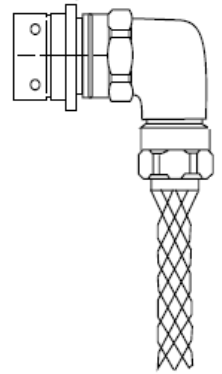
**Box Mount RECP**



**Flange Mount RECP**

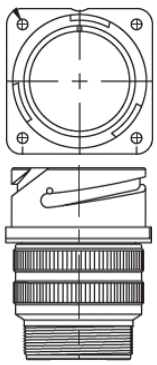


**Straight PLUG**

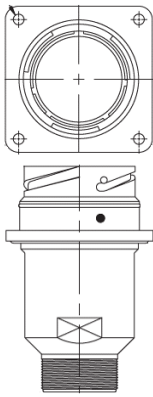


**R/A Flange Mount RECP w/wo Basketweave**

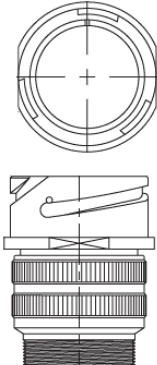
# 1500VDC



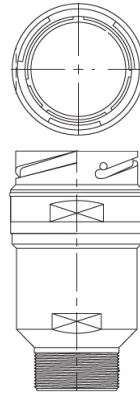
**Wall mount RECP  
(under shell size 36)**



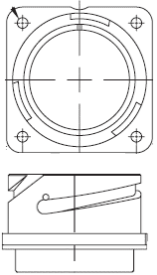
**Wall mount RECP  
(over shell size 48)**



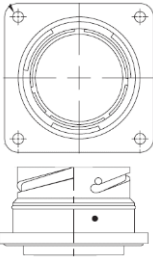
**Inline RECP  
(under shell size 36)**



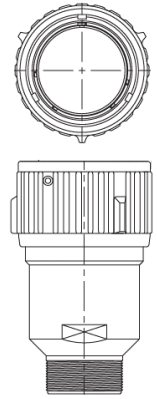
**Inline RECP  
(over shell size 48)**



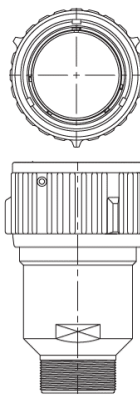
**Box mount RECP  
(under shell size 36)**



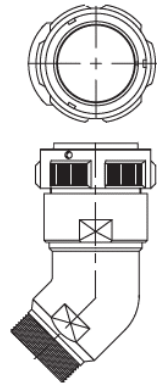
**Box mount RECP  
(over shell size 48)**



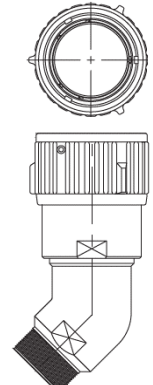
**Straight PLUG  
(under shell size 36)**



**Straight PLUG  
(over shell size 48)**



**45° Angled PLUG  
(under shell size 36)**



**45° Angled PLUG  
(over shell size 48)**



## ADG & ADGC Series

Service Voltage Rating:	E (1750VDC) & B (2450VDC)
Termination:	Solder OR Crimp
Contact Size:	16
Current Rating:	13A
Wire Size:	0.5-3.0mm <sup>2</sup>
Contact Size:	12
Current Rating:	23A
Wire Size:	0.5-6.0mm <sup>2</sup>
Contact Size:	8
Current Rating:	46A
Wire Size:	3.0-10.0mm <sup>2</sup>
Contact Size:	4/0
Current Rating:	350A
Wire Size:	16-95mm <sup>2</sup>
Coupling:	Bayonet
Alternate Keyway:	Yes
Durability:	500+ cycles
RFI Available:	Yes
Finish:	Olive Drab Zinc
	Cadmium
	Electro-less Nickel
	Black Zinc



Insert Arrangement 22-8  
Service Rating E  
Number of Contacts 2  
Contact Size 12



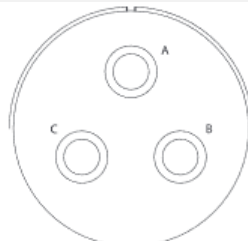
Insert Arrangement 22-9  
Service Rating E  
Number of Contacts 3  
Contact Size 12



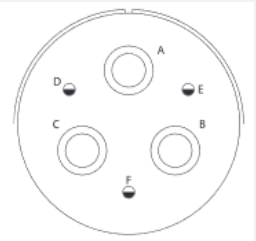
Insert Arrangement 22-10  
Service Rating E  
Number of Contacts 4  
Contact Size 16



Insert Arrangement 28-3  
Service Rating E  
Number of Contacts 3  
Contact Size 8



Insert Arrangement \*48-03  
Service Rating B  
Number of Contacts 3  
Contact Size 4/0



Insert Arrangement \*48-06B  
Service Rating B  
Number of Contacts 3 3  
Contact Size 4/0 12